

Archgard
FIREPLACES



IHEAT:
Intelligent Heat Exchange and Air Transfer

The Benefits of IHEAT:

- Allows heat sensitive objects such as a television or artwork to be installed above the fireplace
- Allows for a lower combustible mantel
- Enables the transfer heat to other rooms or even levels of your home with a maximum duct length of 30 feet
- Multiple possible configurations
- Does not require power or special fans to operate
- Adjustable for variable wall thicknesses or finishes

How to Choose an IHEAT system:

1. Choose an IHEAT compatible fireplace.
Current options include:
Pele 345 (345-DVTE31LN-1)
Sereno 37 (37-DVTE36LN-2*)
Sereno 41 (41-DVTE41LN-2*).
2. Decide which finishing option best completes your space.
3. Order the part numbers shown in this guide.

*IHEAT is not compatible with the 37-DVTE30LN-1 or 41-DVTE36LN-1.

Table of Contents

The IHEAT Difference	3
IHEAT - 4" Collars (for use with the Pele 345 and Sereno 37)	
Single 40" Discharge Head	4
Double 6" x 12" Discharge Head	5
Single 40" Exhaust and 6" x 12" Discharge Head	6
IHEAT - 4" Collars (for use with the Sereno 41)	
Single 40" Discharge Head	7
Double 6" x 12" Discharge Head	8
Single 40" Exhaust and 6" x 12" Discharge Head	9



Intelligent Heat Exchange and Air Transfer (IHEAT)

This system allows you to transfer the convection heat from your Archgard fireplace to where you want it the most; whether within the room, an adjoining room, or the room above.

Technical Specifications

Average Air Flow	100 CFM
Maximum Temperature Output	200°F (93°C)
Maximum Duct Length	30' (914.4 cm)

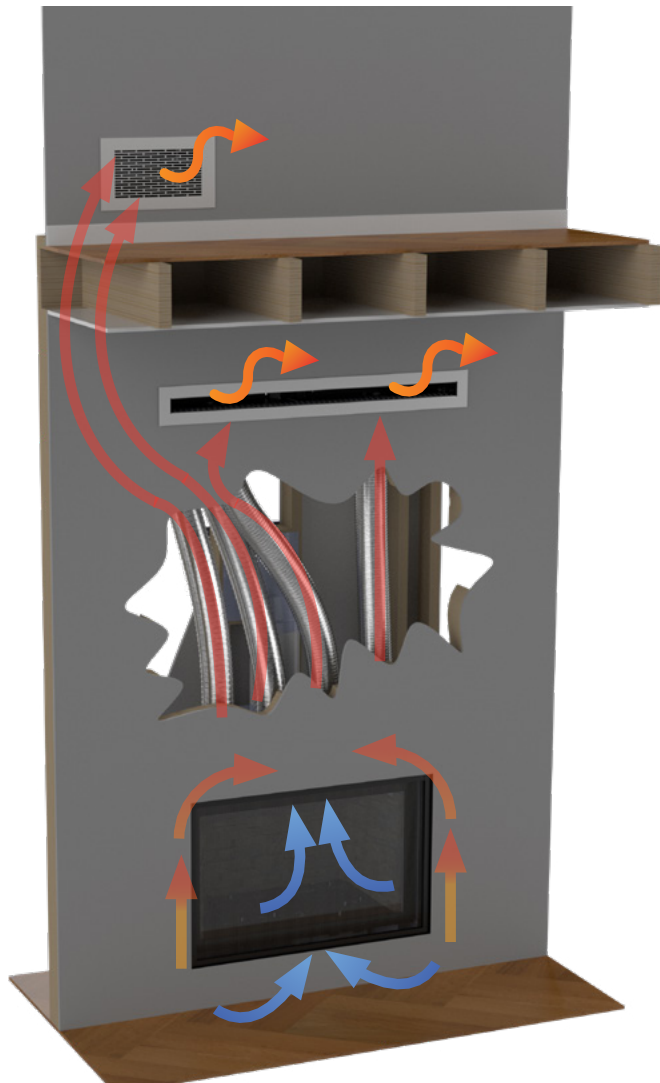
The IHEAT Difference

IHEAT gives you the power to choose how you'd like to heat your home. This Intelligent Heat Exchange and Air Transfer system gives you the ability to transfer the heat from the fireplace away from the fireplace opening to the location of your choosing. Not only does this allow you to direct heat to where you need it most, but it allows even more options for customizing your space.

With IHEAT

Cooler room air enters the fireplace and is warmed by the panoramic wall-to-wall flame. The warm air travels around the firebox and through the ducting to the discharge head(s), directing the warm air to wherever you need it most.

The air immediately above the fireplace opening is cooler, allowing heat sensitive objects to be mounted over the fireplace.*



Without IHEAT

Cooler room air enters the fireplace and is warmed by the panoramic wall-to-wall flame. The warm air travels around the firebox and out of the top of the fireplace to heat the room.

The air immediately above the fireplace opening is warmer and a little more clearance to combustible material is needed.



*See the IHEAT and Installation, Operation, and Maintenance manuals for installation information including framing and required clearances.

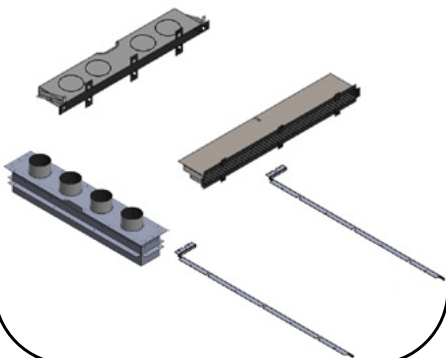
IHEAT - 4" Collars (Compatible with Pele 345 and Sereno 37)

Single 40" Discharge Head

Model: 999-IHT-440

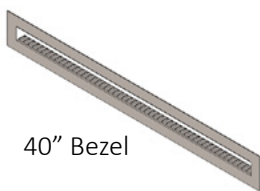
Require 1

999-IHT-440



Require 1. Comes in Black or White

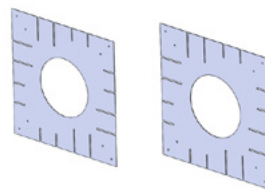
999-IHT40B1B
or
999-IHT40B1W



40" Bezel

Optional. May need no kit, 1 kit or 2 kits

999-IHT-4FS



Firestops

2ply 4" aluminum
Flex venting is
required. You can
supply your own or
purchase these kits
as needed

999-IHT-4V10
One length of 4"
Flex Vent (10ft
when stretched),
Purchased from
Zflex

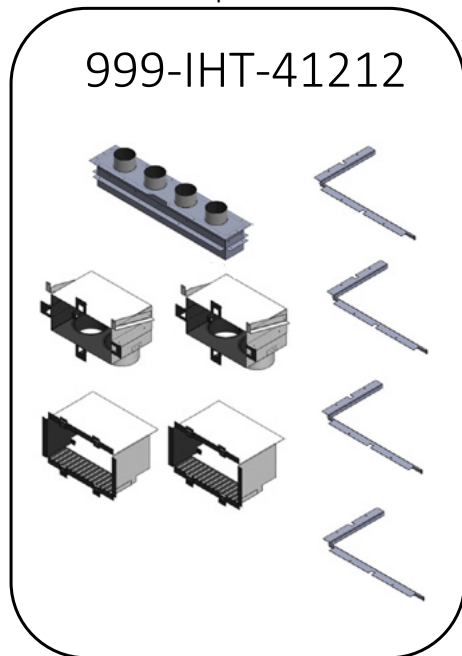
999-IHT-4V25
One length of 4"
Flex Vent (25ft
when stretched),
Purchased from
Zflex



Double 6" x 12" Discharge Head

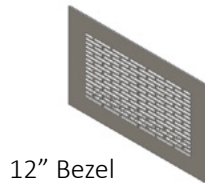
Model: 999-IHT-41212

Require 1



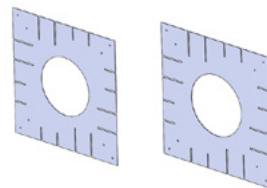
Require 2. Comes in Black or White. 1 per Kit

999-IHT-12B2B
or
999-IHT-12B2W



Optional. May need no kit, 1 kit or 2 kits

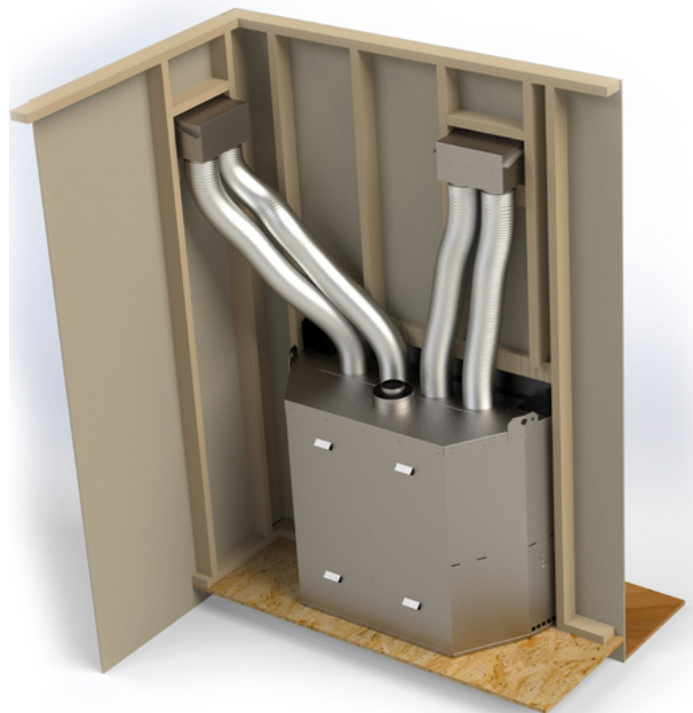
999-IHT-4FS



2ply 4" aluminum Flex venting is required. You can supply your own or purchase these kits as needed

999-IHT-4V10
One length of 4" Flex Vent (10ft when stretched), Purchased from Zflex

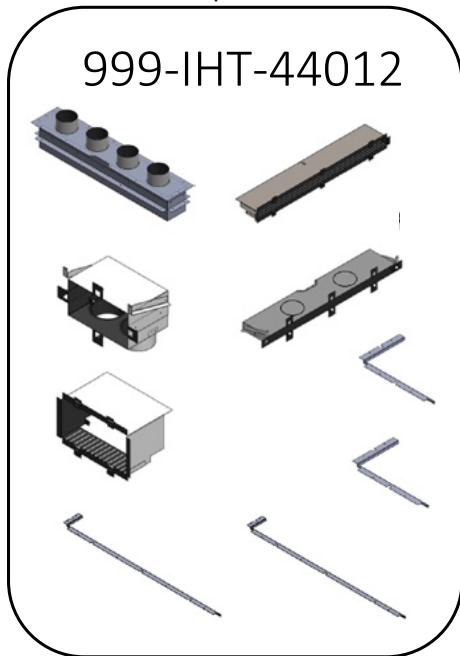
999-IHT-4V25
One length of 4" Flex Vent (25ft when stretched), Purchased from Zflex



Single 40" Exhaust and single 6" x 12" Discharge Head

Model: 999-IHT-44012

Require 1



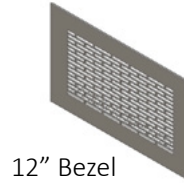
Require 1. Comes in Black or White

999-IHT40B1B
or
999-IHT40B1W



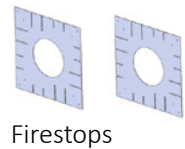
Require 1. Comes in Black or White.

999-IHT-12B2B
or
999-IHT-12B2W



Optional. May need no kit, 1 kit or 2 kits

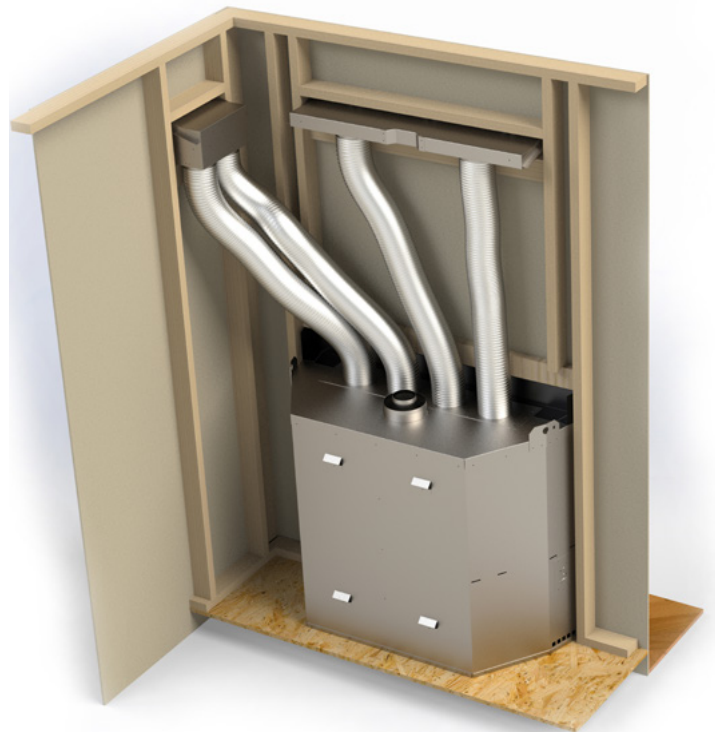
999-IHT-4FS



2ply 4" aluminum
Flex venting is
required. You can
supply your own or
purchase these kits
as needed

999-IHT-4V10
One length of 4"
Flex Vent (10ft
when stretched),
Purchased from
Zflex

999-IHT-4V25
One length of 4"
Flex Vent (25ft
when stretched),
Purchased from
Zflex



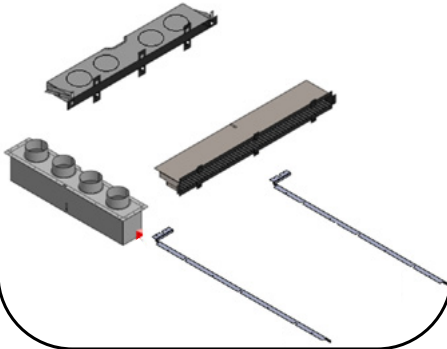
IHEAT - 5" Collars (Compatible with Sereno 41)

Single 40" Discharge Head

Model: 999-IHT-540

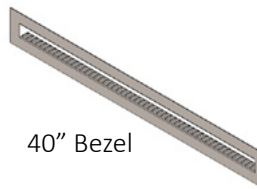
Require 1

999-IHT-540



Require 1. Comes in Black or White

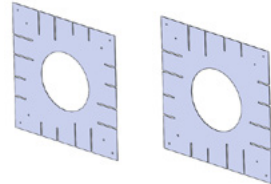
999-IHT40B1B
or
999-IHT40B1W



40" Bezel

Optional. May need no kit, 1 kit or 2 kits

999-IHT-5FS



Firestops

2ply 5" aluminum
Flex venting is
required. You can
supply your own or
purchase these kits
as needed

999-IHT-5V10
One length of 5"
Flex Vent (10ft
when stretched),
Purchased from
Zflex

999-IHT-5V25
One length of 5"
Flex Vent (25ft
when stretched),
Purchased from
Zflex

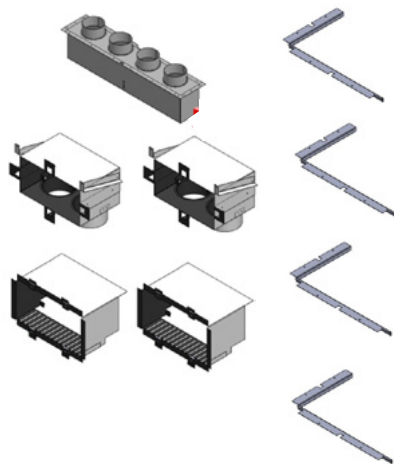


Double 6" x 12" Discharge Head

Model: 999-IHT-51212

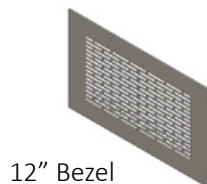
Require 1

999-IHT-51212



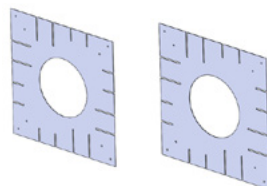
Require 2. Comes in Black or White. 1 per Kit

999-IHT-12B2B
or
999-IHT-12B2W



Optional. May need no kit, 1 kit or 2 kits

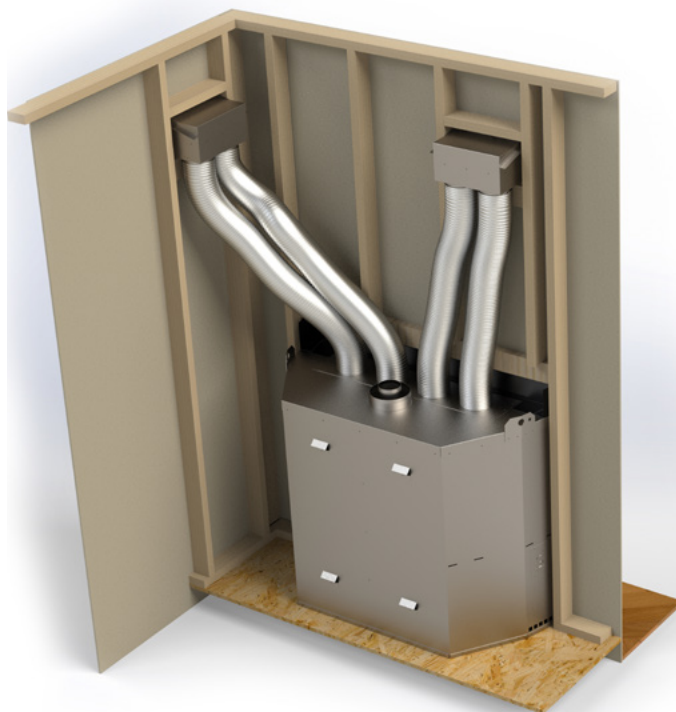
999-IHT-5FS



2ply 5" aluminum
Flex venting is
required. You can
supply your own or
purchase these kits
as needed

999-IHT-5V10
One length of 5"
Flex Vent (10ft
when stretched),
Purchased from
Zflex

999-IHT-5V25
One length of 5"
Flex Vent (25ft
when stretched),
Purchased from
Zflex

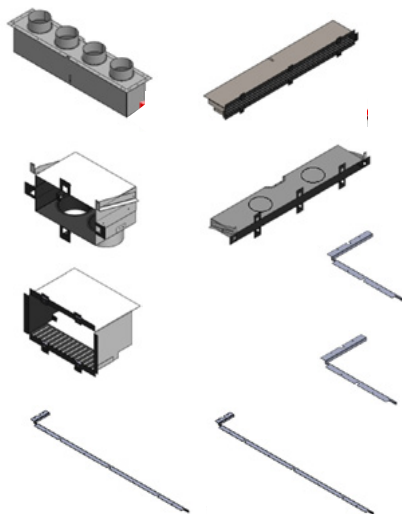


Single 40" Exhaust and single 6" x 12" Discharge Head

Model: 999-IHT-54012

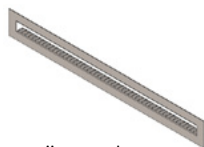
Require 1

999-IHT-54012



Require 1. Comes in Black or White

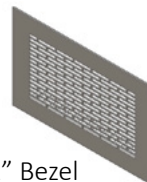
999-IHT40B1B
or
999-IHT40B1W



40" Bezel

Require 1. Comes in Black or White.

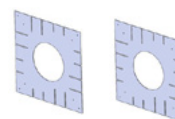
999-IHT-12B2B
or
999-IHT-12B2W



12" Bezel

Optional. May need no kit, 1 kit or 2 kits

999-IHT-5FS

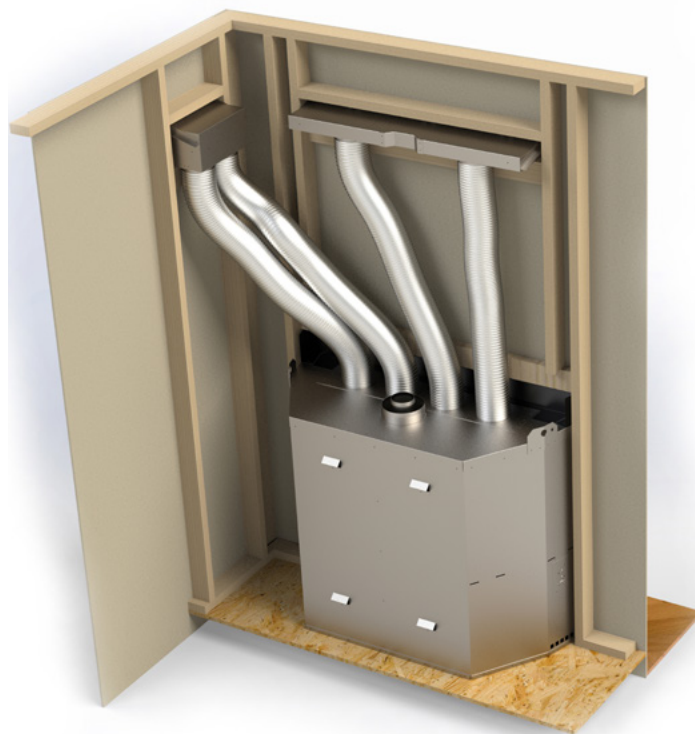


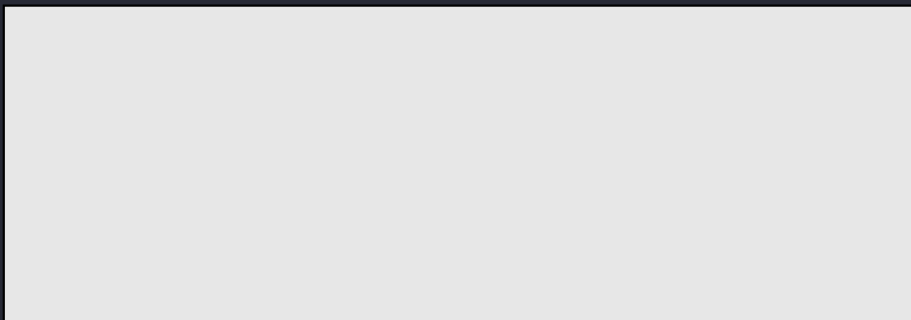
Firestops

2ply 5" aluminum
Flex venting is
required. You can
supply your own or
purchase these kits
as needed

999-IHT-5V10
One length of 5"
Flex Vent (10ft
when stretched),
Purchased from
Zflex

999-IHT-5V25
One length of 5"
Flex Vent (25ft
when stretched),
Purchased from
Zflex





July, 2022

100-2010



Archgard Fireplace Products
7116 Beatty Drive Mission BC V2V 6B4
archgard.com