



## INSTALLATION MANUAL Burner Media

For installation in 50-DVTE36CN-1  
(see the Installation, Operation, and  
Maintenance Manual included with the fireplace)



**WARNING:** If the information in this manual is not followed exactly, a fire or explosion may result causing property damage, personal injury or loss of life.

Do not store or use gasoline or other flammable vapors or liquids in the vicinity of this or any other appliance.

### WHAT TO DO IF YOU SMELL GAS:

- Do not try to light any appliance
- Do not touch any electrical switch; do not use any phone in your building
- Immediately call your gas supplier from a neighbors phone.
- Follow the gas suppliers instructions
- If you can not reach your gas supplier, call the fire department

Installation and service must be performed by a qualified installer, service agency or the gas supplier.

**Only kits supplied by the manufacturer may be used.**

English and French Installation Manuals available through your local dealer or visit our website at:

**[www.archgard.com](http://www.archgard.com)**

Les manuels d'installation en anglais et en français son disponibles chez votre détaillant local ou en visitant notre site web: **[www.archgard.com](http://www.archgard.com)**

After removing the parts from packaging, inspect them to ensure that no damage has occurred. Please report any damage immediately to your authorized Archgard dealer.

### IMPORTANT

Please review and understand the information in this manual in full PRIOR to beginning your installation.

### **INSTALLER:**

LEAVE THIS MANUAL WITH THE APPLIANCE.

### **CONSUMER:**

RETAIN THIS MANUAL FOR FUTURE REFERENCE.

### **ARCHGARD FIREPLACE PRODUCTS**

7116 Beatty Drive  
Mission, BC V2V 6B4 Canada

200-0282-01  
June 2, 2023

# General Information

## 1.0 Important Information

The following information applied for all media installation options.

<b>WARNING</b>	Failure to position the burner media in accordance with the this manual, or failure to use only parts specifically approved with this appliance, may result in property damage or personal injury. Never use unapproved burner media such as rock wool or similar material. The use of unapproved burner media may cause damage or injury and will void product warranty.
<b>IMPORTANT</b>	When burner media around the pilot shield take care to not block the pilot opening. Failure to keep the opening clear of media will cause a delayed ignition. Media should also be placed so they do not completely block burner ports. DO NOT block secondary air gaps at the sides of the burner.

Gas and vent connection must be made before installing burner media.

### Before you begin:

- Ensure the fireplace is OFF and cool before servicing the fireplace
- Ensure the gas supply is turned OFF and disconnect the power supply (including backup batteries)
- Remove barrier screen or decorative front\*
- Remove the valve blind (recommended)\*
- Remove glass door\*

\* See the Installation, Operation, and Maintenance Manual included with the fireplace.

**CAUTION:** DO NOT block pilot opening with burner media.

**NOTE:** Improper placement of burner media may cause soot accumulation on the internal parts and glass. This is not covered under warranty. Do not use damaged media.

The Kojin 50 offers dozens of potential media installation combination options. Burner media may be mixed, and silhouette logs may be placed in almost any configuration or used with any media type.

### There are only few common restrictions:

1. The secondary air channels on the left and right side of the burner may not be blocked.
2. The pilot opening must not be blocked
3. If placing Silhouette logs, they should not be placed directly on the burner ports - use the logs to bridge the burner instead.
4. The Grand Timber and Silver Birch log sets must be installed as shown.
5. Only use approved burner media.

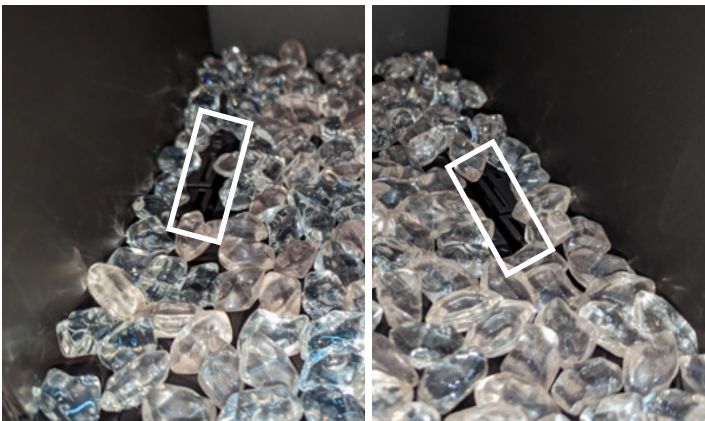


Figure 1.0.01: Secondary Air Openings



Figure 1.0.02: Do not block pilot



## 2.0 Burner Media

### 2.1 Fire Beads

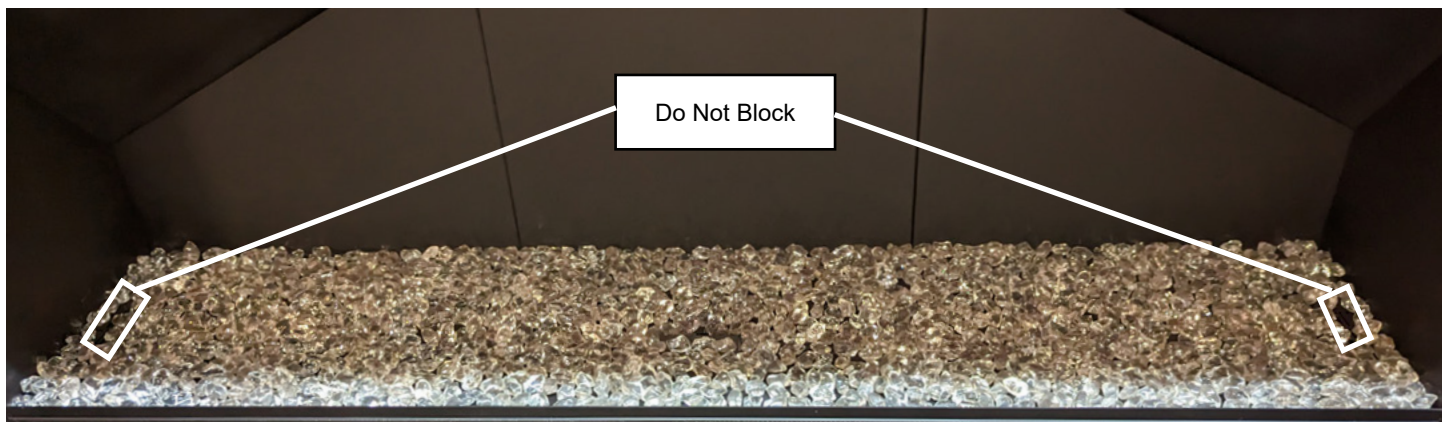
Gas and vent connection must be made before installing burner media.

**CAUTION:** DO NOT block pilot opening with burner media.

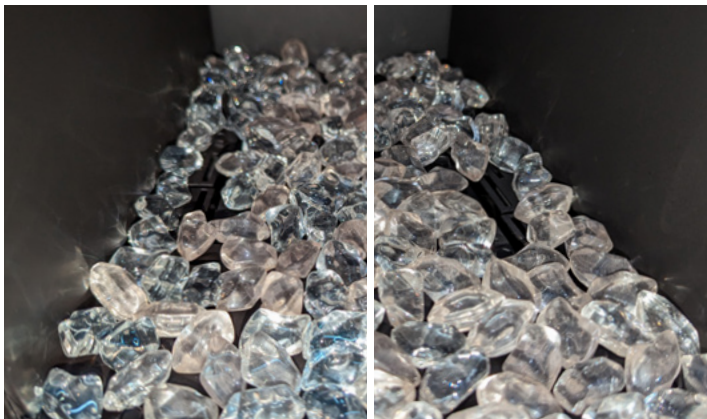
**NOTE:** Improper placement of burner media may cause soot accumulation on the internal parts and glass. This is not covered under warranty. Do not use damaged media.

The following images show installation of Clear White Fire Beads. The installation steps are the same no matter which fire bead option is being installed.

Place the burner media over the the entire burner in a single, staggered layer. Do not block the air openings in the ends of the burner as shown in **Figure 2.1.01** and **Figure 2.1.02**. To cover the pilot shield, place an extra layer along the front of the pilot shield as shown in **Figure 2.1.03**.



**Figure 2.1.01:**



**Figure 2.1.02:** Secondary Air Openings



**Figure 2.1.03:** Covering the Pilot Shield

Fire Beads come in 35 oz bags.

Kit Part Number	Description	Quantity of bags per Fireplace
999-FB-CW35	Clear White Fire Beads	5 bags
999-FB-JB35	Jet Black Fire Beads	4 bags
999-FB-A35	Amber Fire Beads	4 bags

# Installation

## 2.2 Black Embers

Gas and vent connection must be made before installing burner media.

**CAUTION:** DO NOT block pilot opening with burner media.

**NOTE:** Improper placement of burner media may cause soot accumulation on the internal parts and glass. This is not covered under warranty. Do not use damaged media.

Place the burner media over the the entire burner in a single, staggered layer. Do not block the air openings in the ends of the burner as shown in **Figure 2.2.01** and **Figure 2.2.02**. To cover the pilot shield, place an extra layer along the front of the pilot shield as shown in **Figure 2.2.03**.

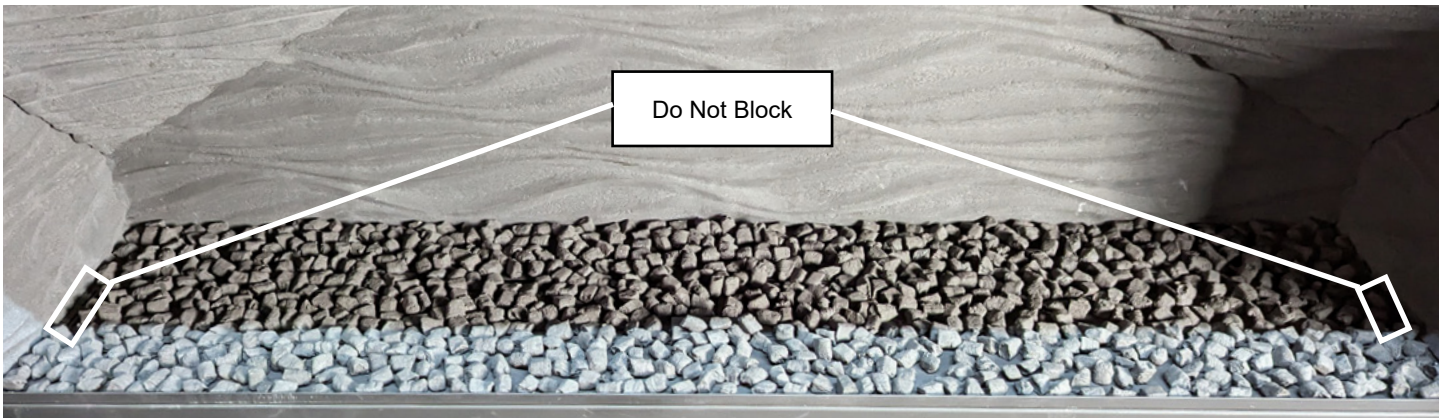


Figure 2.2.01:

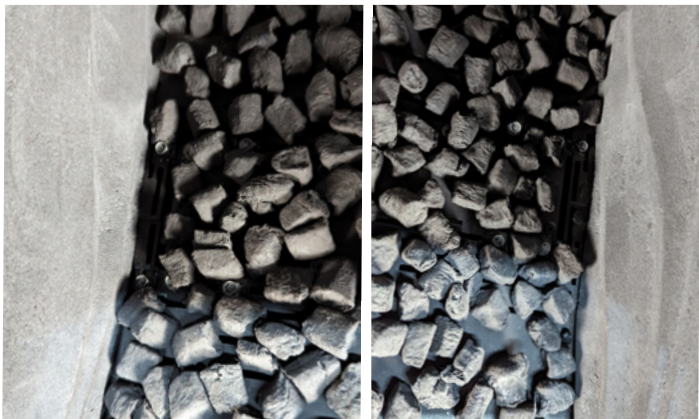


Figure 2.2.02: Secondary Air Openings



Figure 2.2.03: Covering the Pilot Shield

Black Embers come in 2 cup bags.

Kit Part Number	Description	Quantity of bags per Fireplace
310-0020	Black Embers (2 cup bag)	9 bags



## 2.3 River Rocks

The following images show installation of Mississippi River Rocks. The installation steps are the same for the Santa Cruz River Rocks.

Starting with the larger rocks, place the rocks over the the entire burner in a single, staggered layer. Go back to fill in spaces with the medium sized stones. Repeat for the smallest size. Do not block the air openings in the ends of the burner as shown in **Figure 2.3.01** and **Figure 2.3.02**.

**Note:** Rocks may need to be adjusted to avoid excessive sooting. Do not block burner ports with flat sides of rocks.

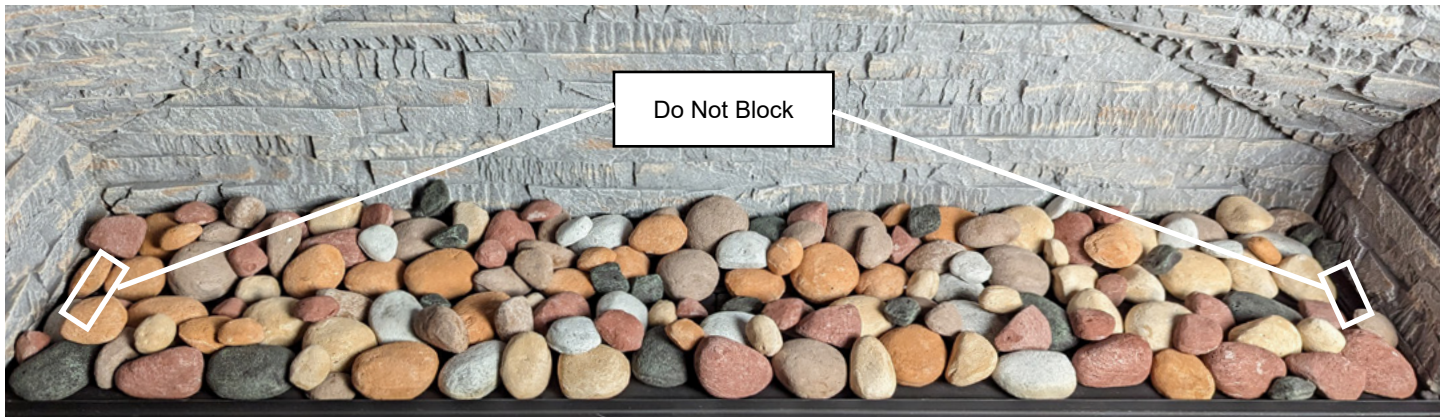


Figure 2.3.01:



Figure 2.3.02: Secondary Air Openings

River Rock Set Part Numbers:

Kit Part Number	Description	Quantity of kits per Fireplace
31-RR	Mississippi River Rocks	2
31-RRG	Santa Cruz River Rocks	2

**Note:** A mixture of river rock kits may be used to create a greater variety in stone colors. Install one of each kit in the color pattern of your choosing.

## 3.0 Silhouette Log Set

Silhouette Log Sets may be used to customize the look of your burner media. The logs are available in white, black, and grey. Each set includes two (2) logs. A maximum of 14 logs may be installed in any color combination. There is no minimum.

Care must be given when handling the logs as they can be damaged or broken if not handled properly. After opening the log set package, inspect the logs to ensure that no damage has occurred inside the package. Please report any damage immediately to your authorized Archgard dealer. Do not use broken or damaged logs.

Glass media, black embers, or river rocks should be installed prior to placing Silhouette Logs.

Randomly place the logs as desired. The logs may cross the flame, however, they should be placed in a way that they bridge the burner. Do not place logs directly over the burner (see **Figure 3.0.02**).

**Note:** Logs may need to be adjusted to avoid excessive sooting.

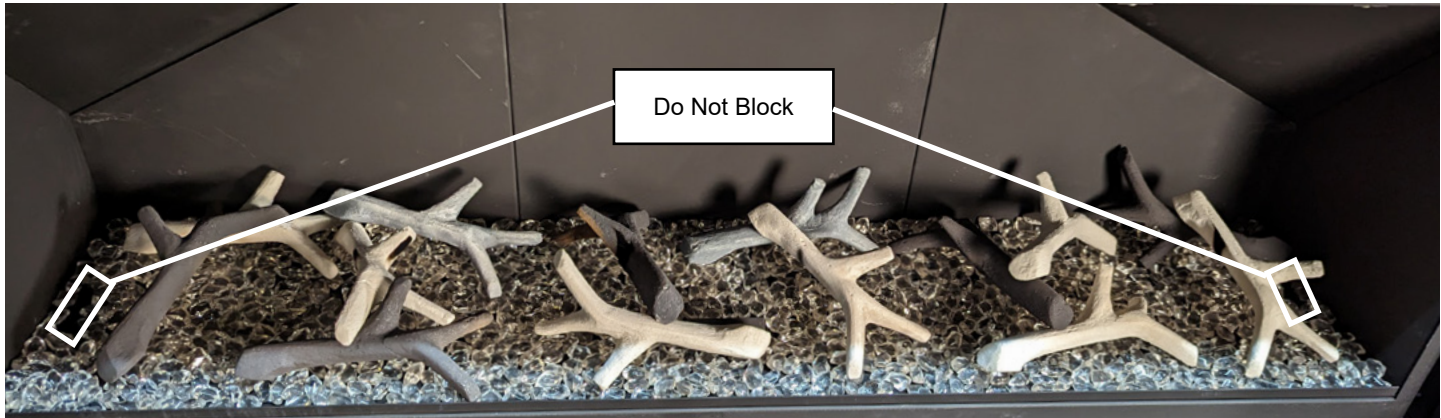


Figure 3.0.01:



Figure 3.0.02: Use logs to bridge the burner.

Silhouette Log Set Part Numbers:

Kit Part Number	Description	Quantity of logs per kit
2-LS-SW	White Silhouette Log Set	2
2-LS-SG	Grey Silhouette Log Set	2
2-LS-SB	Black Silhouette Log Set	2



# Installation

## 4.0 Premium Log Sets

### 4.1 Grand Timber Log Set

The following instructions show the installation of the Grand Timber Log Set with Black Embers. The process is the same if installing the Grand Timber Log Set with Glass Beads or the Silver Birch Log Set. The premium log sets may be installed with River Rocks, however, we recommend only using the small and medium sized rocks.

Premium log sets must be placed in the orientation shown. They cannot be placed randomly.

Care must be given when first installing the logs, and if removed for servicing, as they can be damaged or broken if not handled properly.

After opening the log set package, inspect the logs to ensure that no damage has occurred inside the package. Please report any damage immediately to your Authorized Archgard Dealer.

**NOTE:** Improper placement of logs and embers may cause soot accumulation on the internal parts and glass. This is not covered under warranty. Do not use broken or damaged logs.

**IMPORTANT:** Embers should be placed so as not to completely block burner ports.

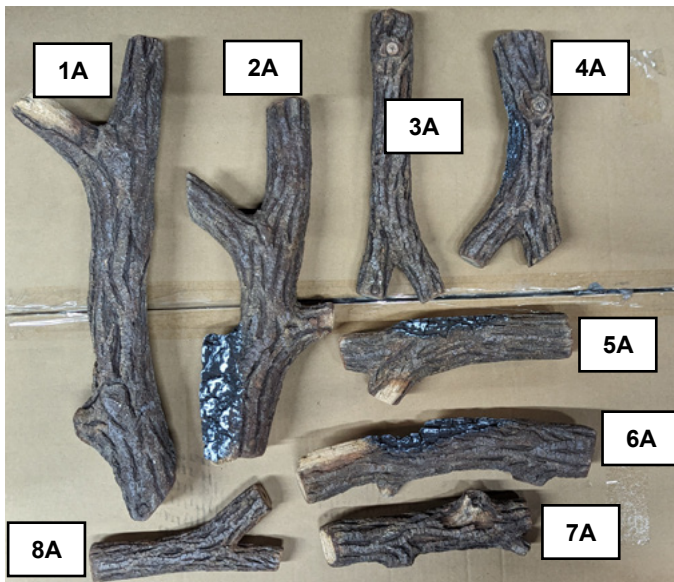


Figure 4.1.01: 999-LS-GTA



Figure 4.1.02: 999-LS-GTB

### WARNING

Failure to position the parts in accordance with these diagrams or failure to use only parts specifically approved with this appliance may result in property damage or personal injury.



# Installation

**Step 1:** Place media along the burners. Do not place media on the burner surround yet.



**Figure 4.1.03:**

**Note:** Do not block the secondary air openings at each end of the burner.



**Figure 4.1.04:**



**Figure 4.1.05:**

**Step 2:** Place Log 1A in the right, rear corner of the firebox as shown.



**Figure 4.1.06:**

**Step 3:** Place Log 1B in the left, rear corner of the firebox.



**Figure 4.1.07:**



# Installation



**Figure 4.1.08:** Logs 1A and 1B in place.

**Step 4:** Place Log 2A in the middle.



**Figure 4.1.09:**

**Step 5:** Log 2B spans the burner with the back end between Log 1B and Log 2A.



**Figure 4.1.10:**



**Figure 4.1.11:**



# Installation

**Step 6:** Place **Log 3A** as shown with the single end on top of Log 1A and the split end in front of the burner.



Figure 4.1.12:



Figure 4.1.13:

**Step 7:** Log 3B rests on Log 1B with the front edge toward the front of the burner.



Figure 4.1.14:



Figure 4.1.15:

**Step 8:** Place **Log 4A** on Log 1A with the branched end toward the front of the burner.



Figure 4.1.16:



Figure 4.1.17:



# Installation

**Step 9:** Place **Log 4B** toward the front of the burner with the longer branch resting on Log 3A.



Figure 4.1.18:



Figure 4.1.19:

**Step 10:** Place the back of **Log 5A** where Log 1A and Log 2A meet. The front of the log aligns toward the front of the burner.



Figure 4.1.20:



Figure 4.1.21:

**Step 11:** Place **Log 6A** with the back on top of Log 1B and the front aligned at the front of the burner.



Figure 4.1.22:



Figure 4.1.23:



# Installation

**Step 12:** Place **Log 7A** with one end on Log 6 and the split end aligned toward the front of the burner.



Figure 4.1.24:



Figure 4.1.25:

**Step 13:** Place the split end of **Log 8A** on top of Log 2B with the front edge aligned at the front of the burner.



Figure 4.1.26:



Figure 4.1.27:

**Step 14:** Spread Black Embers along the burner surround and logs in an even layer. Do not block the secondary air openings as shown in **Figure 5.0.04** and **Figure 5.0.05**.



Figure 4.1.28:



# Installation



Figure 4.1.29:

Part #	Item Description	Qty	Part #	Item Description	Qty
999-LS-GTA	Log Set A	1 Set	999-LS-GTB	Log Set B	1 Set
999-LS-GTA-1	Log 1A	1	999-LS-GTB-1	Log 1B	1
999-LS-GTA-2	Log 2A	1	999-LS-GTB-2	Log 2B	1
999-LS-GTA-3	Log 3A	1	999-LS-GTB-3	Log 3B	1
999-LS-GTA-4	Log 4A	1	999-LS-GTB-4	Log 4B	1
999-LS-GTA-5	Log 5A	1			
999-LS-GTA-6	Log 6A	1			
999-LS-GTA-7	Log 7A	1			
999-LS-GTA-8	Log 8A	1	310-0020	Black Embers (2 cup bag)	5

### 4.2 Silver Birch Log Set

**Silver Birch Log Set information coming soon!**



## NOTES

[illegible]

**ARCHGARD INDUSTRIES LTD.**

7116 BEATTY DRIVE  
MISSION, B.C. V2V 6B4  
CANADA

WEBSITE: [WWW.ARCHGARD.COM](http://WWW.ARCHGARD.COM)