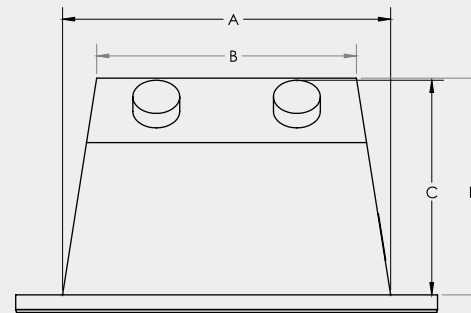


TECHNICAL SPECIFICATIONS

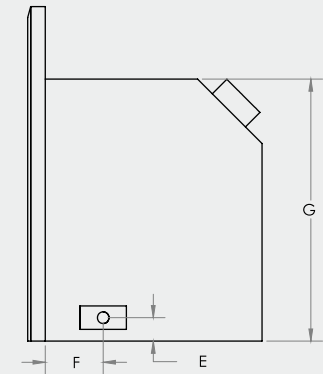
22 DVI24N	
Natural Gas Input Rating	16,000-24,000 BTU/HR 4.68-7.03 kW/hr
Propane Input Rating	17,000-23,000 BTU/hr 4.98-6.74 kW/hr
Efficiencies	
Steady State	85%
AFUE Efficiency	77%
P4	48.77%
Clearance to Combustibles	
Mantle Clearance	34" from bottom of unit to bottom of 6" mantle
Surround Side Clearance	1"
Minimum Fireplace Opening Dimensions	
	23" W x 18" H x 15-3/4" D*
*Add 2" H x 5" W x 1.5" D when using Forged Iron Front	
Viewing Area	23.5" W x 10.5" H
Vent Size	Two 3" (76mm) vents

TECHNICAL DIMENSIONS

TOP VIEW



SIDE VIEW



22 DVI24N

A	B	C	D
22-5/8"	13"	14"	14-1/8"
575mm	330mm	356mm	359mm
E	F	G	
1-1/4"	3-3/4"	17-7/8"	
32mm	93mm	454mm	



*See Installation, Maintenance, and Operation manual for further information and specifications.

** All inserts come standard with barrier screens which attach to the door with very little effort.